

FAST FACT

## RigakuSync3

### ENHANCED DATA INTEGRITY

RigakuSync is an advanced, optionally automated companion software application that allows the Rigaku Progeny 1064 nm handheld Raman analyzer to securely transfer scan data from a device to a PC. The RigakuSync application has an option to allow automatic “blind” backup of data results in multiple file formats. The operator-level user no longer needs to worry about backing up data manually, and the administrator can control who has access to the exported result files.

The latest RigakuSync3 (RS3) version provides an easy method to back up data to a secure server location in just 3 simple steps:

1. Connect Progeny to PC and start RigakuSync3 application
2. Log in with user credentials
3. Sync the new data – can begin automatically!



### ADDED BENEFITS

ALL DATA FILES ARE:

- ✓ Searchable
- ✓ Sortable
- ✓ Reviewable
- ✓ Export your device data in various file formats including xml, csv, txt, pdf, and spc
- ✓ Review exported spectral data on your favorite native file reviewing program

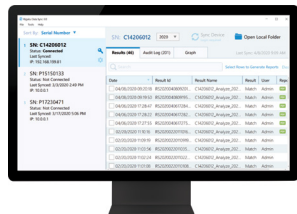


# RigakuSync3 SOFTWARE STREAMLINES YOUR DATA BACKUP PROCESS FOR A MORE CONFIDENT AUDIT TRAIL



Progeny

Connection via  
USB or WiFi



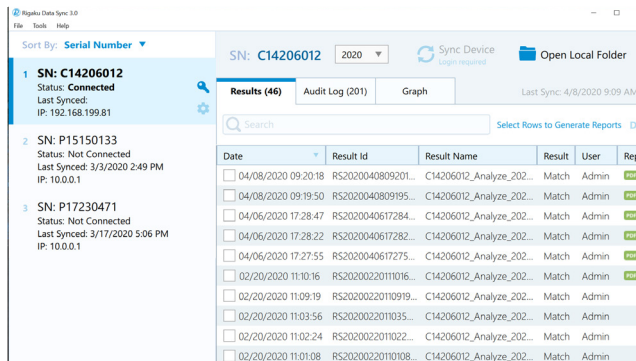
RigakuSync3 on  
Network PC



Local Server

## RigakuSync3 MAKES DATA INTEGRITY A NO-BRAINER!

- Downloads data into your Data Sync database
- Includes reports, images, and data files
- Allows for multiple users with variable rights for sync of data and access to results
- Uses same accounts and user level permissions set on Progeny analyzer
- Complete audit trail for all system activities and diagnostic log
- Streamlined interface for quick spectral reviewing



## YOUR GUIDE TO CHOOSING THE RIGHT ANALYZER FOR YOU:



- ✓ 1064 nm Raman technology
- ✓ Integrated camera
- ✓ Oversized touchscreen and keypad
- ✓ User defined libraries
- ✓ RigakuSync3

